



2121 on Mill

2121 S Mill Ave, Tempe, AZ 85282



Tom Kuffler

Civic Asset Management
8776 E Shea Blvd, Suite 106-138, Scottsdale, AZ 85260
tomk@CivicAssetManagement.com
(480) 264-0668 Ext: 101



2121 on Mill

\$21.96 /SF/Yr

2121 Mill is an attractive mid-century modern office building designed by acclaimed local architect Thomas Montgomery. This multi-tenant office building, with highly sought after Mill Avenue frontage, is ideally situated just south of ASU and Downtown Tempe; one of the most desirable locations in the state due to its thriving 24-7 live/work/play environment. The building consists of a decorative masonry, podium style construction with a classic look and plenty of surface and covered parking.

2121 Mill offers an inviting mix of small and moderate sized suites , many with ensuite bathrooms, ideal for the professional services industry, as well as a creative...

- Property features Mill Avenue frontage & covered parking
- Suites have a classic mid-century modern design
- Suites are designed to accomodate small to moderate sized tenants
- Property has elevator access to second floor
- Monitored, Video Camera system
- Fenced ground floor Courtyard



Rental Rate:	\$21.96 /SF/Yr
Min. Divisible:	850 SF
Property Type:	Office
Property Subtype:	Loft/Creative Space
Building Class:	B
Rentable Building Area:	16,528 SF
Year Built:	1968
Walk Score ®:	54 (Somewhat Walkable)
Transit Score ®:	49 (Some Transit)
Rental Rate Mo:	\$1.83 USD/SF/Mo

2nd Floor Ste 204-205

Space Available	1,200 - 2,590 SF
Rental Rate	\$21.96 /SF/Yr
Date Available	Now
Service Type	Full Service
Built Out As	Professional Services
Space Type	Relet
Space Use	Office
Lease Term	Negotiable

Suite 204-205 consists of several windowed private offices, private restroom, kitchenette, with nice open space feel. Can be divided....

2nd Floor Ste 216

Space Available	850 SF
Rental Rate	\$21.96 /SF/Yr
Date Available	Now
Service Type	Full Service
Built Out As	Professional Services
Space Type	Relet
Space Use	Office
Lease Term	Negotiable

Typical style floor plan, with a reception, two private offices and a private restroom. Lots of natural light....

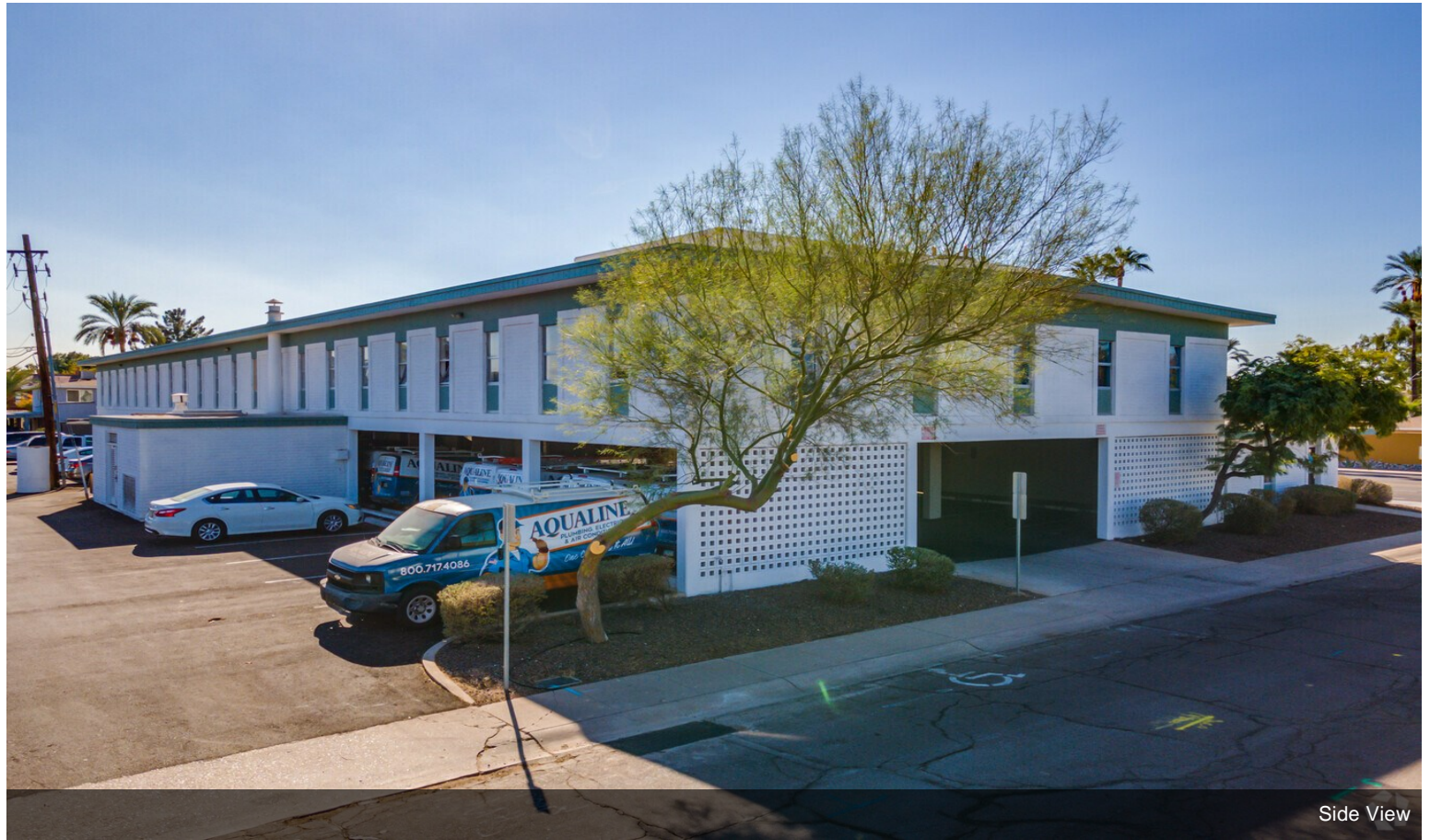


2121 S Mill Ave, Tempe, AZ 85282

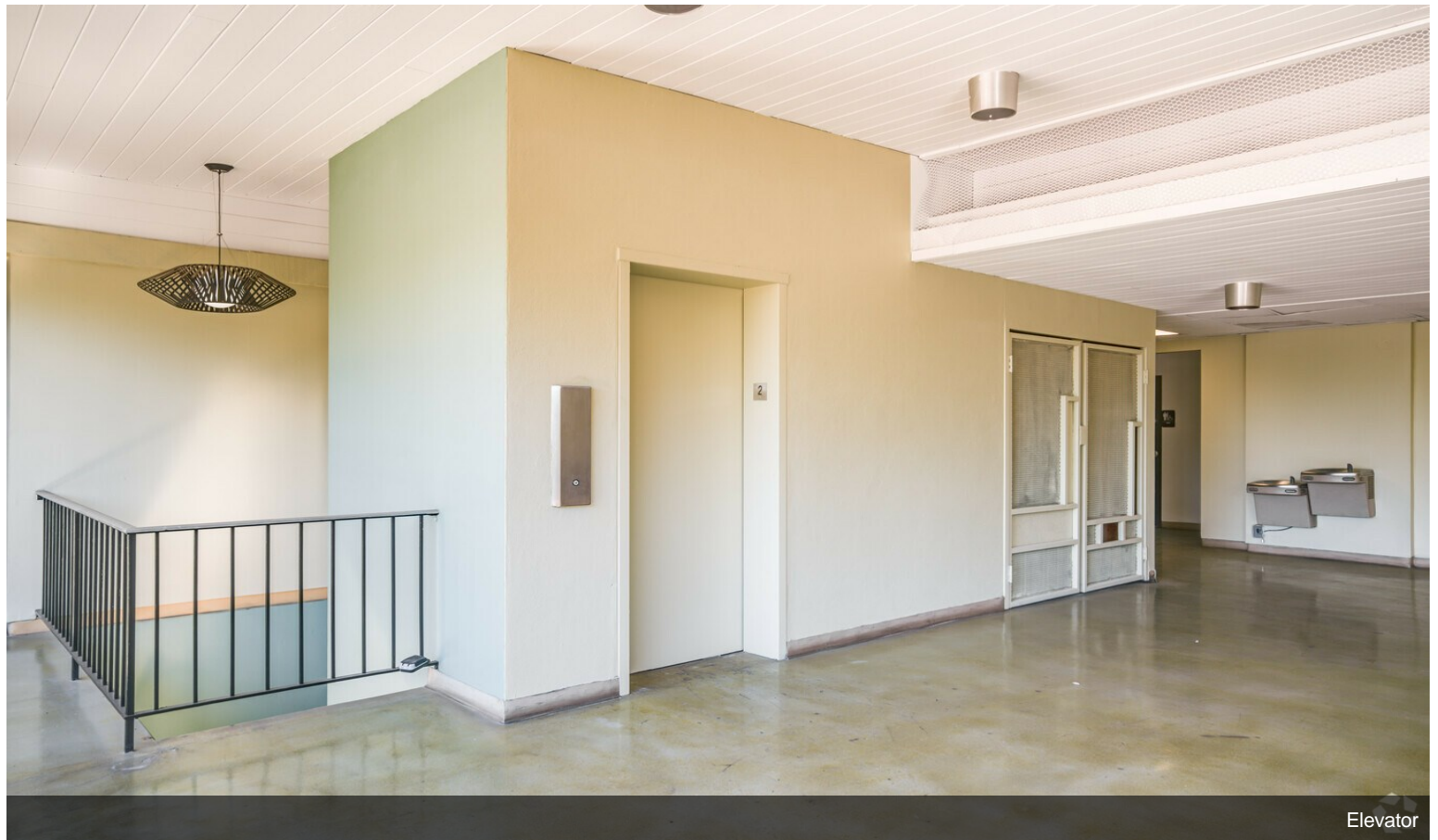
2121 Mill is an attractive mid-century modern office building designed by acclaimed local architect Thomas Montgomery. This multi-tenant office building, with highly sought after Mill Avenue frontage, is ideally situated just south of ASU and Downtown Tempe; one of the most desirable locations in the state due to its thriving 24-7 live/work/play environment. The building consists of a decorative masonry, podium style construction with a classic look and plenty of surface and covered parking.

2121 Mill offers an inviting mix of small and moderate sized suites , many with ensuite bathrooms, ideal for the professional services industry, as well as a creative energetic vibe to it's tenants. The Property is located in close proximity to major metropolitan Phoenix freeway systems, including Highway 60, Interstate 10, and Highway 101. Phoenix's Sky Harbor Airport is located just 3 miles to the west, providing a quick 5-minute commute via Hohokam Expressway (SR-143).

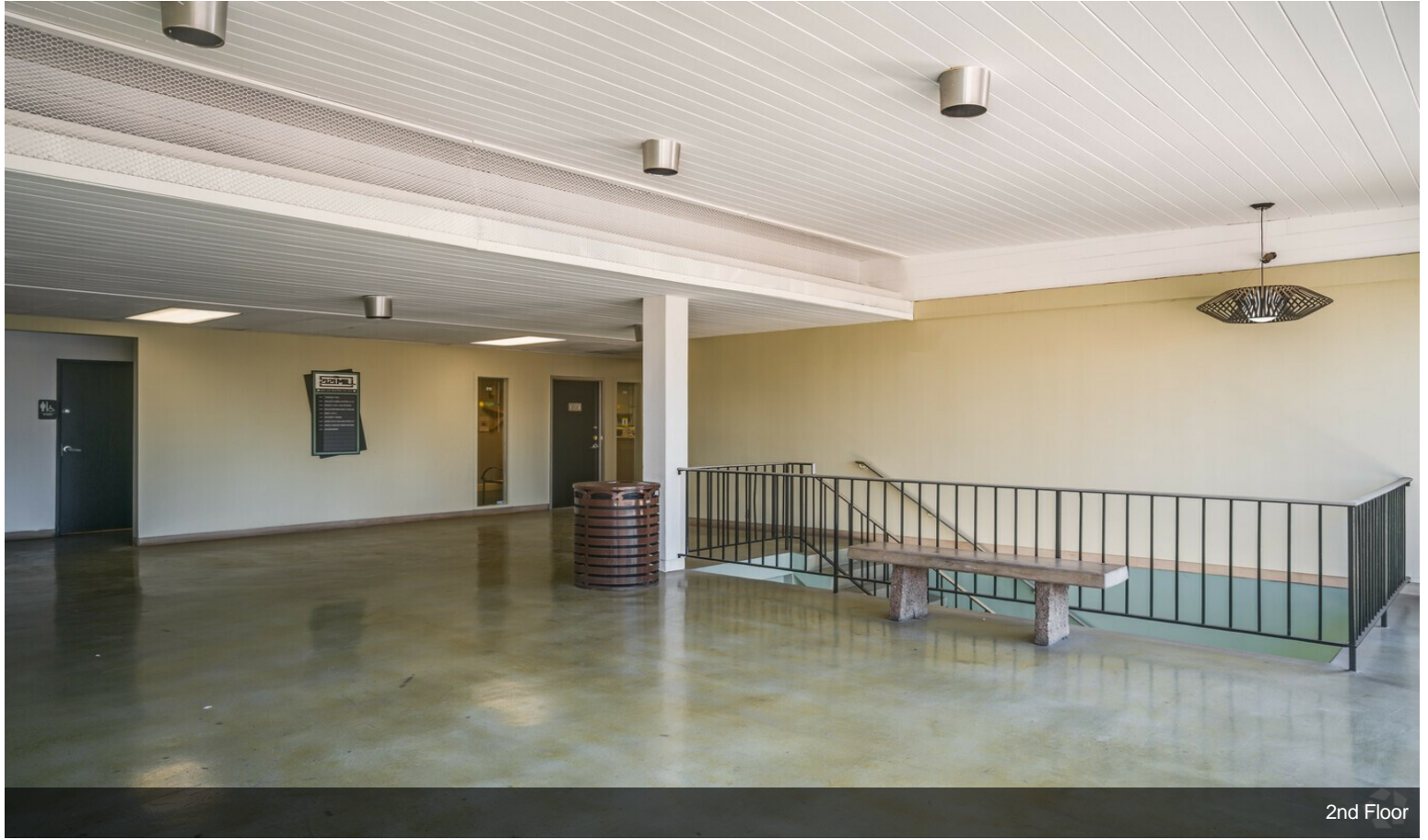
Property Photos



Property Photos



Property Photos



2nd Floor



Property Signage

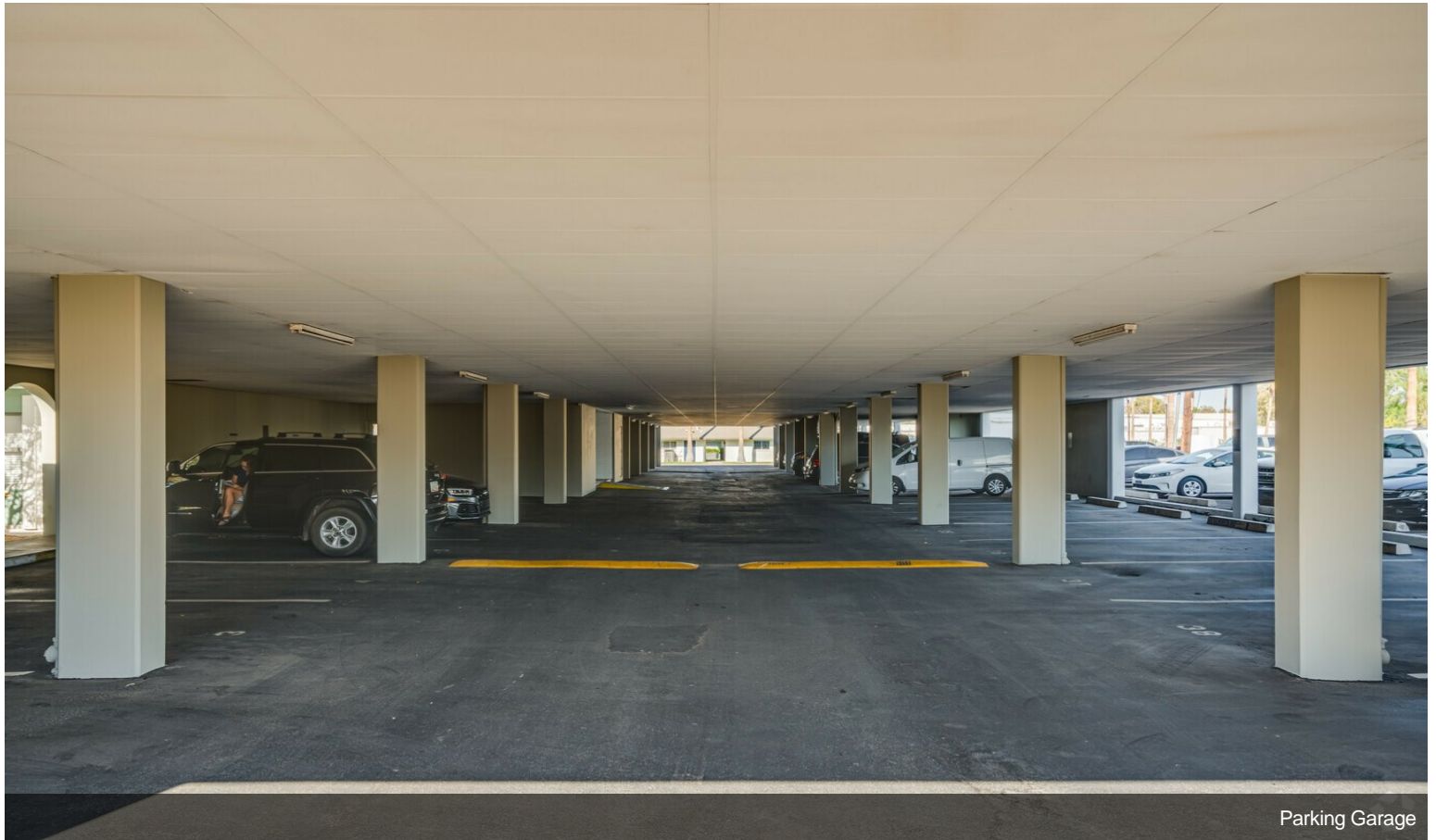
Property Photos



Property Photos



Parking Garage



Parking Garage

Property Photos

